

## KLP<sup>®</sup>-V Glass Fiber Reinforced Pile Planking



**KLP<sup>®</sup>-V Glass Fiber Reinforced Pile Planking** offers you a robust and sustainable solution with respect to bank support.

KLP<sup>®</sup> has an expected technical lifetime of at least 50 years, it doesn't rot or splinter and requires no maintenance and doesn't contain poisonous substances.

KLP<sup>®</sup>-V Pile Planking consists of solid plastic tongue and groove planks. A robust construction that is water-permeable at the same time. There are various sizes and designs to choose from.

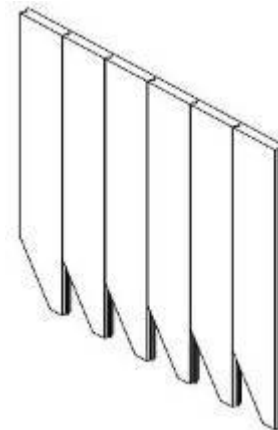


Our range also offers **KLP<sup>®</sup> Fenders** (steel reinforced or glass fibre reinforced) for a solid construction. A total and sustainable solution to your piling and bank support needs.

KLP<sup>®</sup> can easily be sawn, drilled, planed, nailed, stapled and screwed. We offer you fitting instructions and advice on construction.



Cross-cut KLP<sup>®</sup> Tongue & Groove board



KLP<sup>®</sup> Pile planking with optional guide

*Durable & Environmentally friendly*

## KLP®-V Pile Plank (glass fiber reinforced)

Dimension : 20 x 5 cm

Length : max. 390 cm

## KLP® Reinforced Fender

### ■ *KLP®-V (glass fiber reinforced)*

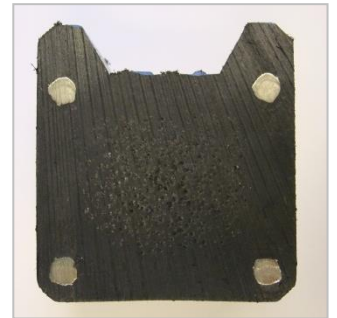
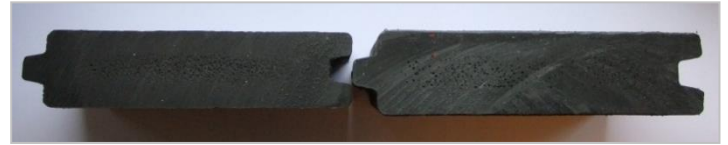
Dimension : 10 x 10 cm

Length : max. 315 cm

### ■ *KLP®-S (steel reinforced)*

Dimension : 10 x 10 x 520 cm (peg&hole connection)

: 15 x 16 x 500 cm (peg&hole connection,  
with recess)



## Advantages of KLP®:

- Sustainable
- Environmentally friendly
- Maintenance free
- Impact resistant
- Easy to process
- No rotting or splintering
- Recyclable
- UV, water and weather resistant
- Expected technical lifetime of at least 50 years

*Durable & Environmentally friendly*